

BY THE NUMBERS

2020 QUALITY OVERVIEW FOR NEXUS NEURORECOVERY CENTER

NEXUS

NEURORECOVERY CENTER

MENDING MINDS.

A Nexus Health Systems Facility

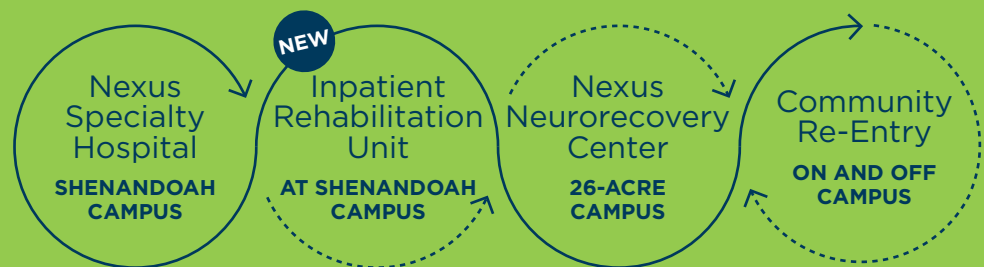
Nexus Neurorecovery Center offers meaningful rehabilitation for individuals who are stable after suffering a brain injury or other neurological impairment. Our 26-acre, homelike campus features six residential homes, a 24,500 square foot state-of-the-art rehabilitation facility, and 38 different programming options.

Working with patients who may have been unsuccessful in traditional rehabilitation environments, our flexible admissions criteria allows us to treat a wide variety of diagnoses. Delivering treatment to patients with primary medical issues with potential secondary behavioral problems, Nexus' patients benefit from our individualized treatment plans and sub-specialties, as we continue **mending minds**.

Neurocontinuum of Care

Nexus Health Systems offers a continuum of neurological rehabilitation and treatment from intensive care services to community-based assisted living facilities.

Treatment plans are decided by patient needs



Standards of Care

- Neurology
- Neuropsychology
- Neuropsychiatry
- Physical Medicine & Rehabilitation
- Physical Therapist
- Occupational Therapist
- Speech-Language Pathologist
- Cognitive Therapist
- Recreational Therapist
- Certified Vocational
- Rehabilitation Counselor
- Behavioral Analyst
- Family Practice

167



Employees

155



Inpatients Served

43



Outpatients Served

63



Licensed Beds

6



Unlicensed Beds on Campus
(Cornerstone Program)

9



Unlicensed Beds off Campus
(Apartment Program)

4.3

Overall Patient Satisfaction Score

★★★★★ 4.3
Physical Environment

★★★★★ 4.2
Medication Management

★★★★★ 4.4
Nursing Services

★★★★★ 3.9
Nutrition Services

★★★★★ 4.6
Rehabilitation Services

★★★★★ 4.1
Medical Staff Services

★★★★★ 4.4
Direct Care Staff

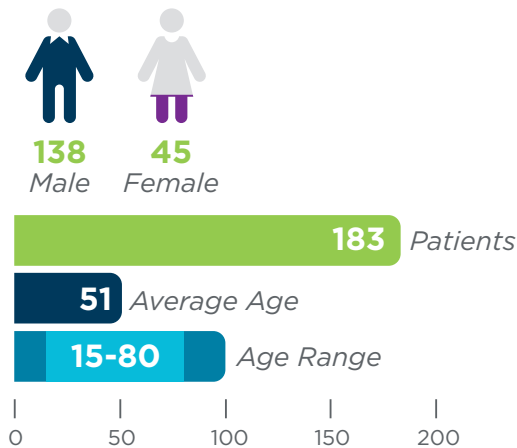
★★★★★ 4.5
Case Management/
Program Director Services

Rehabilitation Demographics

Nexus Neurorecovery Center prides itself on delivering exceptional care and support to our patients and their families. To develop quality initiatives and ensure needs are met, individual goals are discussed in conjunction with clinical goals to prepare the patient for an optimal discharge.

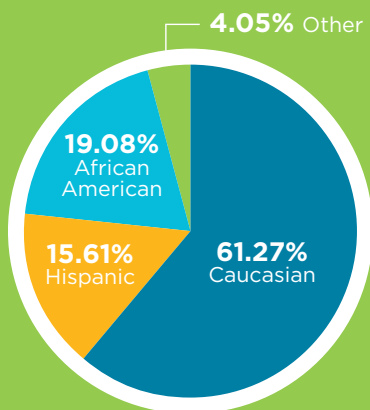
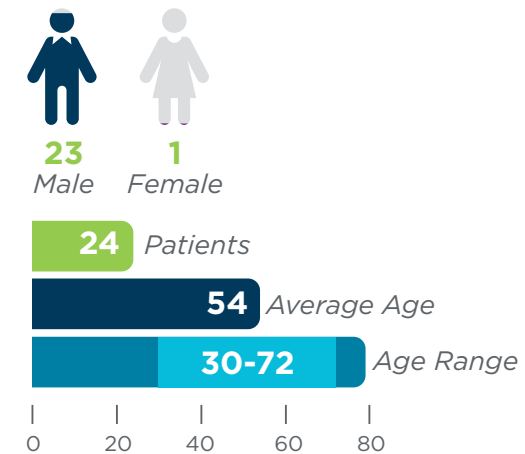
Transitional Rehabilitation Services

Patients with a length of stay less than one year.

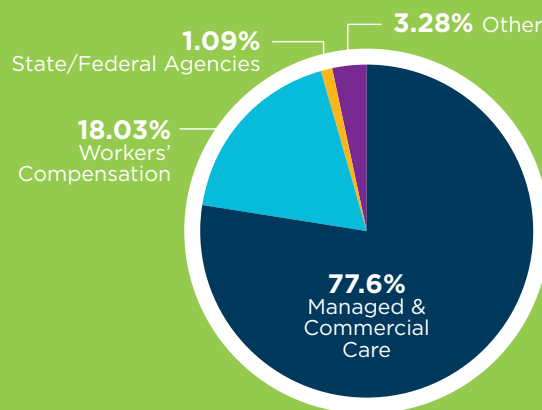


Life Care Services

Residents are individuals who have been here more than one year.



Ethnic Population



Payor Mix

62



Avg. Length of Stay (days)

Outcomes

The progress individuals achieve while participating in our therapeutic programs is measured using the following outcome measurement assessments. The information is collected within 72 hours of admission and discharge.

Neurobehavioral Rating Scale-Revised (NRS-R)

The NRS-R is a nationally recognized 27 item instrument that utilizes a seven-level ordinal scale. Improvement is noted by a decrease in score, denoting disruption of cognition, energy, metacognition, somatic symptoms, anxiety, and language. This measurement tool is found to have specificity and validity

Functional Independence/Assessment Measure (FIM/FAM)

A nationally utilized 30 item assessment that uses a seven-level ordinal scale. An increase in independence is noted by an increase in score. The Functional Independence Measure (FIM) portion assesses motor and cognitive dimensions. The Functional Assessment Measure (FAM) compliments the FIM portion and includes cognitive, behavioral, communication, and community functioning measures. This measurement tool is found to be reliable and valid.

Residential Program

150


Patients Discharged

Mayo-Portland Adaptability Inventory-4 (MPAI-4)

A nationally recognized tool utilized to assist with clinical evaluations. The 35 item assessment results in an ability, adjustment, and participation index score. It represents a measure of physical, cognitive, emotional, behavioral, and social functioning that may be problematic. The MPAI-4 also assesses major obstacles to community integration which may result directly from a brain injury.

Total Discharged Transitional Residential Care

● Admissions ● Discharge

MPAI-4 Ability



MPAI-4 Adjustment



MPAI-4 Participation



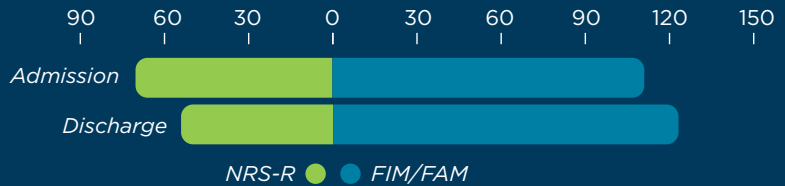
MPAI-4 Total



0 5 10 15 20 25 30 35 40

Residential Outcome Measurements Assessment

The lower NRS-R scores show the patients have improved self-control, orientation, and mobility. The higher FIM/FAM scores show they improved their physical and cognitive abilities.



Brain Injury Program

85


Patients Discharged

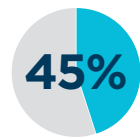


Transitional Patients

Stroke Program

68

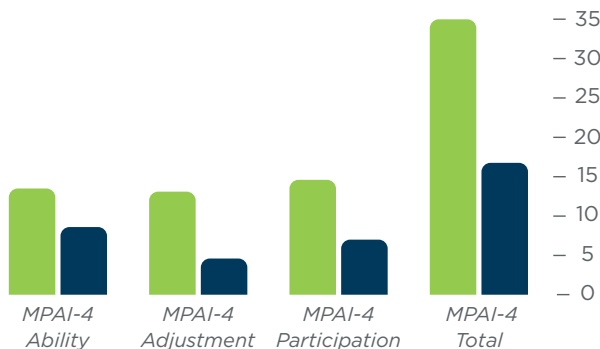

Patients Discharged



Transitional Patients

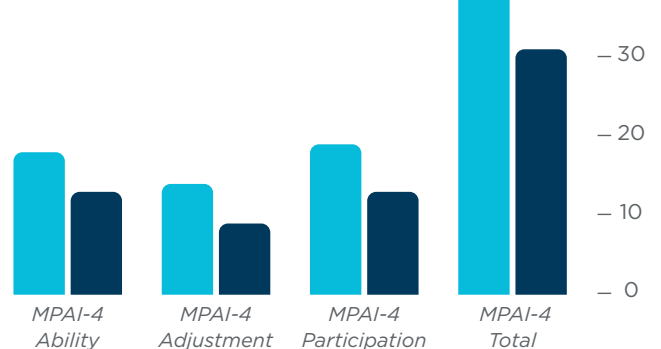
Transitional Adult Residents with Brain Injury

● Admissions ● Discharge



Transitional Adult Residents with Stroke

● Admissions ● Discharge



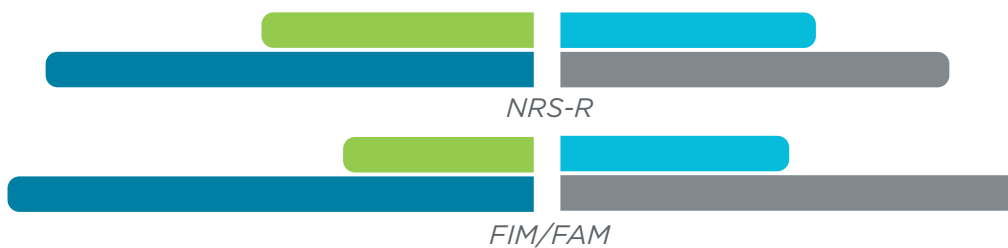
Traumatic Brain Injury



Non-Traumatic Brain Injury



150 120 90 60 30 30 60 90 120 150



● Admissions ● Discharge

Services

Outpatient Rehabilitation

Nexus Neurorecovery Center modifies outpatient rehabilitation programs to accommodate the needs of our patients. Our outpatient programs can offer case management, physical, occupational, speech, and cognitive therapies, testing, counseling, and medical oversights as needed.

43



Outpatients Served

774



Total Visits for the Year

16



Average Number of Visits

Vocational Services

The mission of the Vocational Services Program at Nexus Neurorecovery Center is making the individual's life meaningful and productive. The purpose of the program is developing a set of skills a person can use daily and unmasking the self-pride associated with the ownership of these skills. Accomplishing this mission and purpose on an individual basis should naturally lead to an interesting, enjoyable quality of life.

85



Inpatients Served

2



Outpatients Served

13



Patients Underwent Vocational Testing

58%



Residents utilized Vocational Services



CARF Accredited

Nexus Neurorecovery Center strives to provide the highest quality services with superior outcomes. Our residential facility has met a comprehensive set of standards for quality business and service delivery practices through the Commission on Accreditation of Rehabilitation Facilities (CARF). Each provider's commitment to excellence is evaluated on-site and reviewed annually. Nexus Neurorecovery Center's CARF accredited programs include:

Rehabilitation Programs:

- Brain Injury Program (*Adults*)

Residential Rehabilitation Programs:

- Brain Injury Program (*Adults*)
- Brain Injury Program (*Children & Adolescents*)
- Stroke Specialty Program (*Adults*)

Interdisciplinary Outpatient Medical Rehabilitation Programs:

- Brain Injury Program (*Adults*)
- Stroke Specialty Program (*Adults*)

Vocational Services:

- Brain Injury Program (*Adults*)
- For further information on our accreditation please visit www.carf.org